

Alto 1

# Ever Grande City

Go Ichinose/ Junichi Masuda

From Pokemon Ruby and Sapphire

Arr. Brandon Moore

Swing ♩ = 138

Musical score for Alto 1, featuring a key signature of one sharp (F#) and a tempo of 138 beats per minute. The score is written in treble clef and includes various musical notations such as notes, rests, slurs, and dynamic markings.

The score is divided into sections marked with letters A and B.

Section A (Measures 17-24):

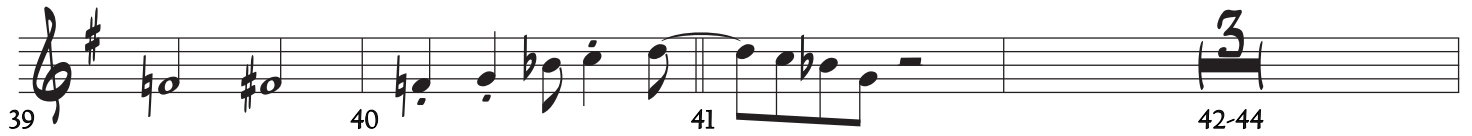
- Measure 17: *mf*
- Measures 18-24: Continuation of the melodic line.

Section B (Measures 33-38):

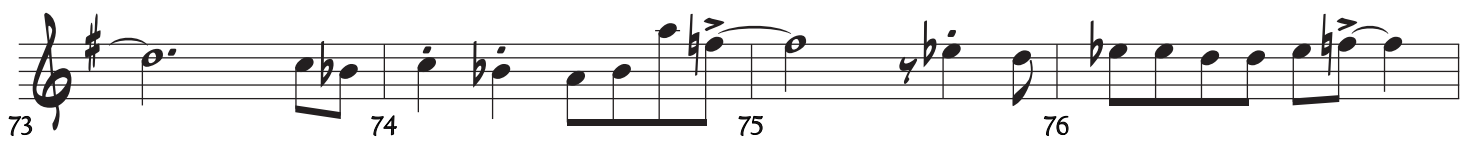
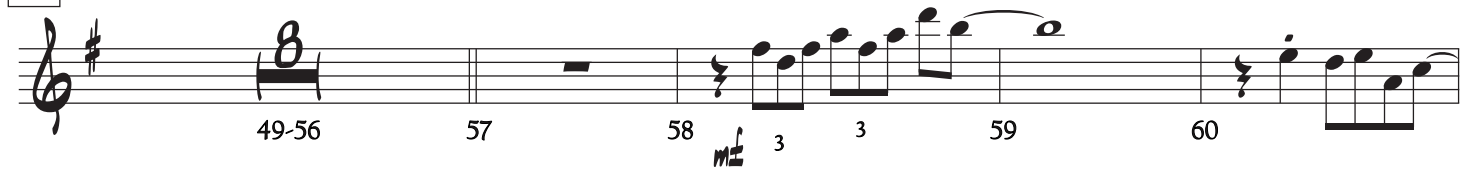
- Measures 33-35: Triplet marking (3).
- Measures 36-38: Continuation of the melodic line.

Measures are numbered 1 through 38. Dynamic markings include *mf* (mezzo-forte) and *sim.* (sforzando).

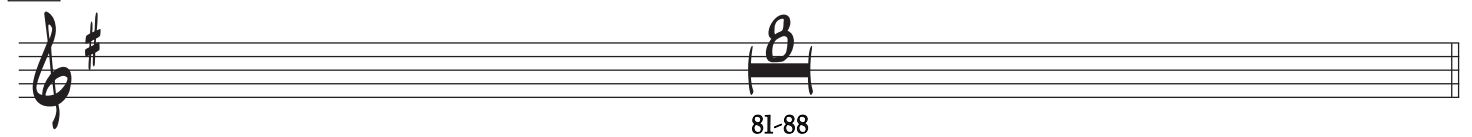
Ever Grande City - Alto 1 - pg 2



C



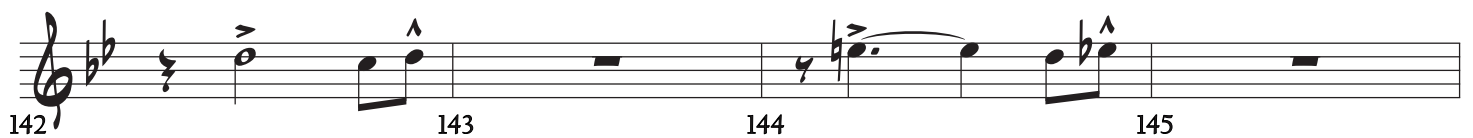
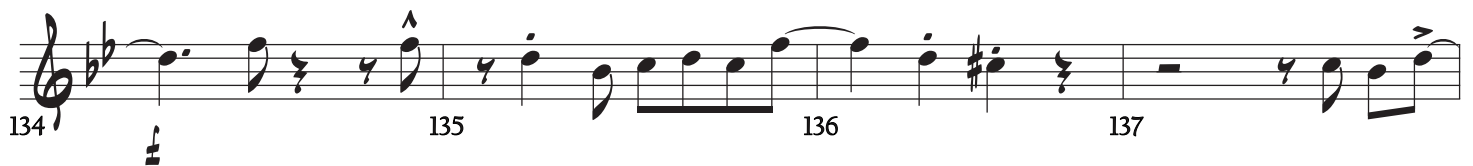
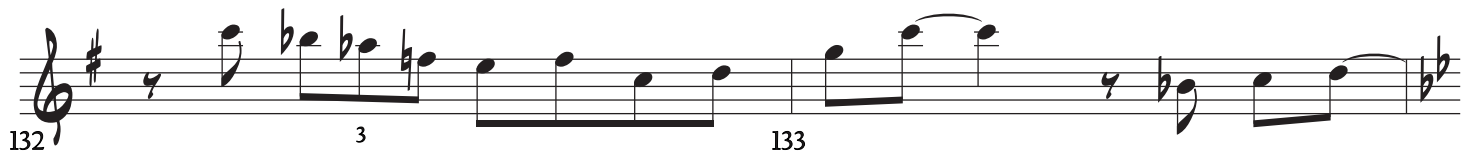
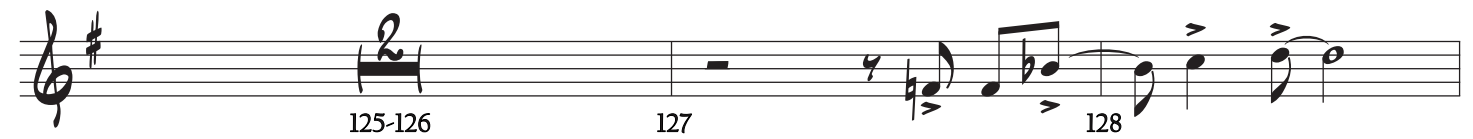
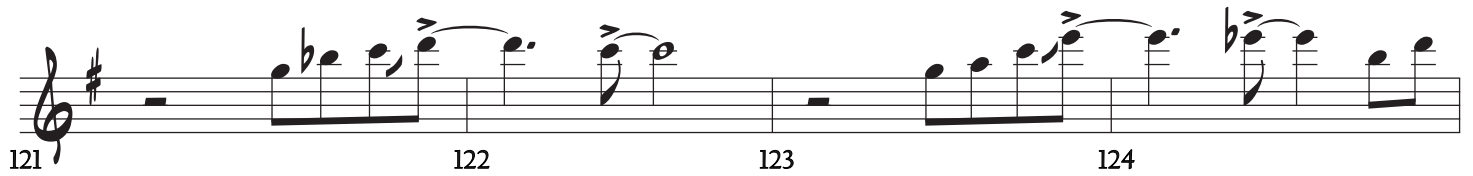
D



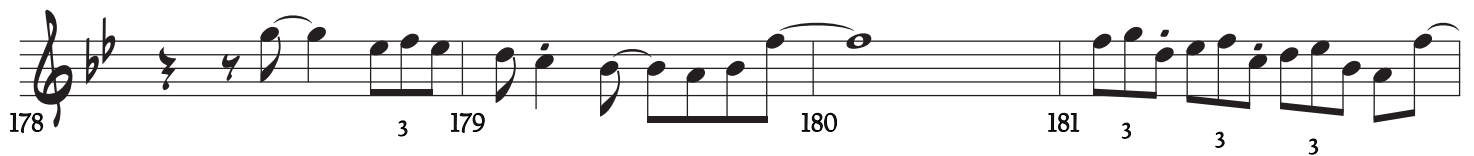
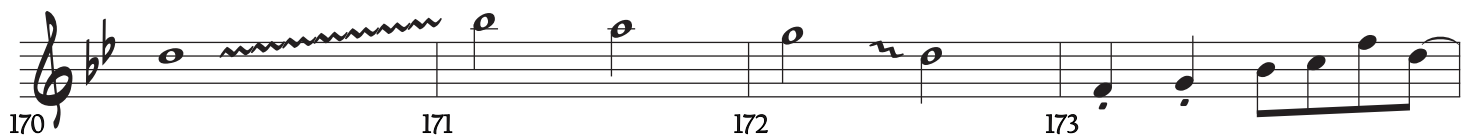
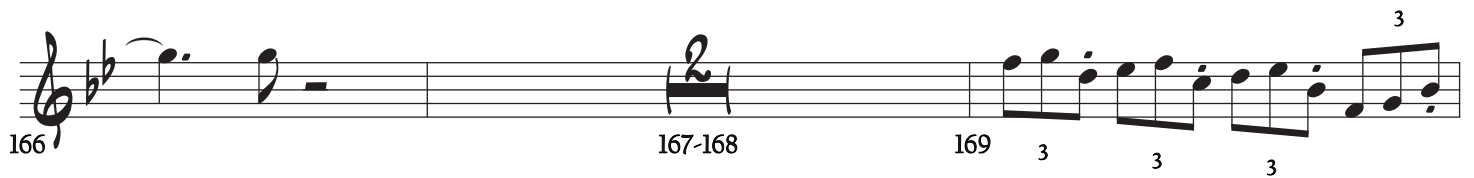
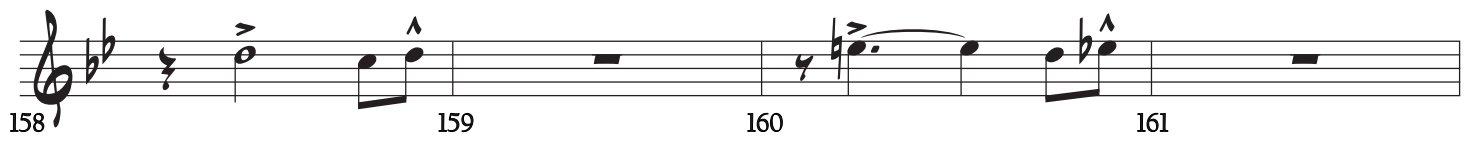
Ever Grande City - Alto 1 - pg 3



E



Ever Grande City - Alto 1 - pg 4



Ever Grande City - Alto 1 - pg 5

Musical score for Alto 1, measures 182-188. The score is written in treble clef with a key signature of two flats (B-flat and E-flat). The time signature is 4/4. The notation includes various musical symbols such as notes, rests, accidentals, and articulation marks.

Measures 182-188:

- Measure 182: Quarter note G4, quarter note A4, quarter note B4, quarter note C5.
- Measure 183: Quarter note D5, quarter note E5, quarter note F5, quarter note G5.
- Measure 184: Quarter note A5, quarter note B5, quarter note C6, quarter note D6.
- Measure 185: Quarter note E6, quarter note F6, quarter note G6, quarter note A6.
- Measure 186: Quarter note B6, quarter note C7, quarter note D7, quarter note E7.
- Measure 187: Quarter note F7, quarter note G7, quarter note A7, quarter note B7.
- Measure 188: Quarter note C8, quarter note D8, quarter note E8, quarter note F8.

Measure numbers 182, 183, 184, 185, 186, 187, and 188 are indicated below the staff.